



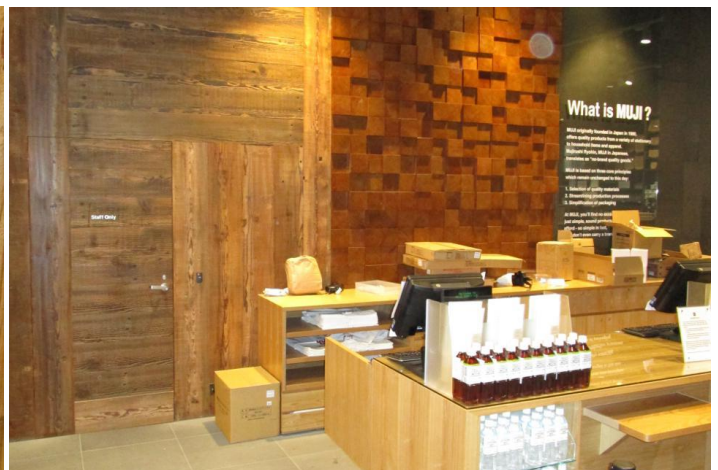
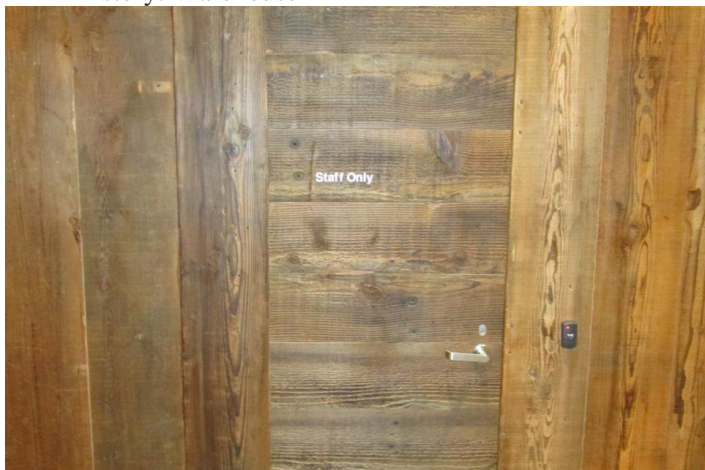
## **Oregon-Douglas Fir for Cladding, Joinery & Furniture Use**

Posted on [April 6, 2016](#) by [TM](#)

- Width: 200mm ; Thickness: 25mm
- Length – Min: 1.2 m ; Max: 3.5 m
- Suggested Use: Cladding, Joinery & Furniture
- Species: Oregon-Douglas Fir
- Source: Recycled
- Condition: Air Seasoned
- SKU Code: TTTTP-1268

### **Description: Oregon**

- Profile: Twin Edged
- Grade: Joinery & Furniture
- Surface Condition: Brushed
- History: Warehouse





Like it... share it...

Posted in [Cladding](#), [Joinery & Furniture](#), [Oregon-Douglas Fir](#)